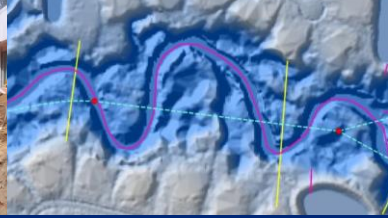


CAPABILITY STATEMENT

HUBZone SBA Certified

CIVIL ENGINEERING | STORMWATER MANAGEMENT



KENT BOULICAULT, P.E. | PRINCIPAL ENGINEER | 407.679.3001 | kjb@saiengineers.com
11723 Orpington Street, Suite 100, Orlando, FL 32817 | www.saiengineers.com

CORE COMPETENCIES

Singhofen & Associates, Inc. (SAI), a Florida firm, provides comprehensive services in the following areas:

- Civil engineering – site design (horizontal infrastructure)
 - utilities, parking, roads, stormwater mgmt., etc.
- All related permitting
- Construction inspection / management
- GIS development and management services
- Complex surface water modeling (incl. levee/dam breach)
- Environmental restoration
- Sedimentation / erosion countermeasures
- Floodplain modeling and mapping (FEMA)
- Flooding and water quality mitigation

PAST PERFORMANCE

Civil Infrastructure Design

USACE, MacDill AFB, City of Palm Coast, City of Tallahassee
Town Center Community Development District
Palm Coast Park Community Development District
Florida Landmark Communities

Surface Water Management

USACE, MacDill AFB, Southwest Florida Water
Management District, Orange, Seminole, Sarasota, and
Escambia Counties, City of Tallahassee, City of Ocoee, City
of Palm Coast

References and project profiles are available upon request.

DIFFERENTIATORS

- HUBZone (SBA Certified)
- Emphasis on quality and responsiveness has afforded SAI a number of long-term clients (as long as 28 years).
- SAI engineers are among the most experienced surface water modelers in the country.
- This expertise results in more defensible designs and optimized use of available land.
- SAI recognizes that stormwater is often the neglected utility in site design and has demonstrated that creative designs can result in significant construction cost savings.

COMPANY DATA

- Providing high quality engineering services for over 30 years.
- Recognized for our expertise in hydrodynamic modeling as well as constructible / maintainable designs.
- SAI Principals are actively involved in each project.
- Firm is comprised of multiple licensed professional engineers, staff and project engineers, GIS professionals, and GIS/ CADD technicians.
- 3 Certified Floodplain Managers (CFM)
- Key staff mentored by company founder, Pete Singhofen, the developer of ICPR (stormwater model)
- Over 30 years experience working with permitting agencies.
- DUNS # 783377690
- HUBZone certified Small Business Enterprise
- NAICS Code: 541330 – Engineering Services
- SIC code: 8711 – Engineering Services
- CAGE Code: 5BJ85
- FL Professional Engineer : 5112
- Society of American Military Engineers (SAME)
Jacksonville and Space Coast Posts Sustaining Member
- American Society of Civil Engineers (ASCE) Member
- Florida Engineering Society (FES) and Florida Institute of Consulting Engineers (FICE) Member
- Professional Liability Insurance (\$2M)