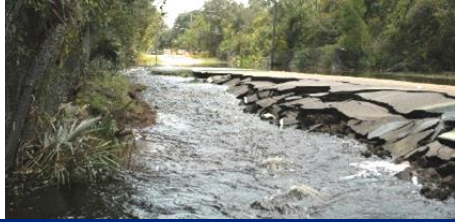


CAPABILITY STATEMENT



STORMWATER MANAGEMENT | CIVIL ENGINEERING



KENT BOULICAULT, P.E. | PRINCIPAL ENGINEER | 407.679.3001 | kjb@saiengineers.com
11723 Orpington Street, Suite 100, Orlando, FL 32817 | www.saiengineers.com

CORE COMPETENCIES

- Complex surface water modeling (incl. levee/dam breach)
- Floodplain modeling and mapping (FEMA)
- Environmental restoration design
- Flooding, water quality, and erosion mitigation design
- GIS development and management services
- Permitting
- Civil engineering – site design (horizontal infrastructure)
 - utilities, parking, roads, parks, athletic facilities, pump stations, stormwater mgmt., etc.
 - structures – major bridges, sheet pile walls, etc.
- Construction inspection / observation
- Design-build project services

PARTIAL LIST OF CLIENTS

- Department of Labor
- USACE - Jacksonville
- USACE - Mobile*
- NASA – Kennedy Space Center*
- USAF – MacDill AFB*
- USAF – Avon Park AFR*
- DHS – Customs and Border Protection*
- DHS – Federal Emergency Management Agency*
- US Agency for International Development*

*as a sub-consultant



US Army Corps of Engineers®



U.S. AIR FORCE



DIFFERENTIATORS

- **HUBZone (SBA Certified)**
- Knowledge of DOD design, CADD, and GIS standards / requirements.
- Emphasis on quality and responsiveness has afforded SAI multiple long-term clients (as long as 32 years).
- Excellent CPARS reviews.
- Recognized for our expertise in hydrodynamic modeling as well as constructible / maintainable designs.
- SAI Principals are actively involved in each project.
- Firm is comprised of multiple licensed professional engineers, staff and project engineers, scientists, GIS professionals, and GIS / CADD technicians.
- Multiple Certified Floodplain Managers (CFM)

COMPANY INFO

- DUNS # 783377690
- HUBZone certified Small Business Enterprise
- NAICS Code: 541330 – Engineering Services
- SIC code: 8711 – Engineering Services
- CAGE Code: 5BJ85
- FL Professional Engineer : 5112
- Society of American Military Engineers (SAME) Jacksonville and Space Coast Posts Sustaining Member
- American Society of Civil Engineers (ASCE) Member
- Professional Liability Insurance (\$2M)
- DCAA compliant